



# Opti-mize IC-M40

inspection camera

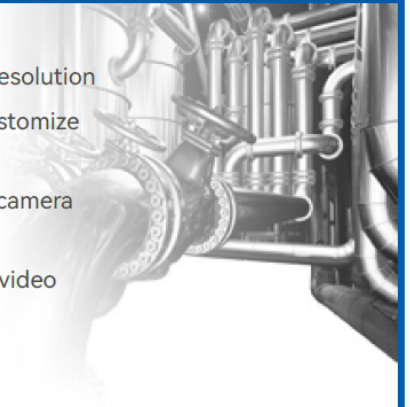
- | HD Capacitive Touch Screen
- | Modular Design
- | Long-Distance Inspection



## HD main unit



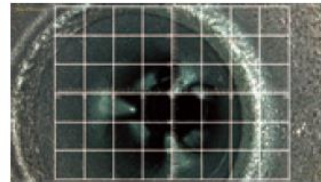
- 7-inch LCD capacitive touch screen, 1920\*1080 resolution
- One-Click design for capture, record, preview, customize
- Compatible with pipe camera, electronic flexible camera and rigid camera
- Equipped with 64G SD card to record inspection video
- 8-Level real-time image magnification.



## Powerful operating system

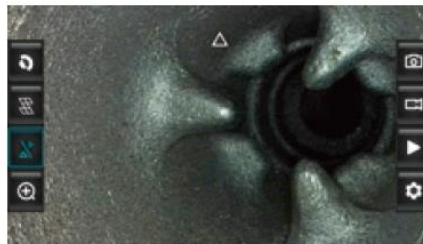


one-click negative display



scale measurement function

- Switch between direct view and side view via button control.



Full screen front view



full screen side view

## Long-Range Pipe Camera



- Quick-change dual camera.
- Hard long-distance push cable.
- Excellent industrial pipe inspection competence.
- Full-equipped type: with ultra-long 30m inspection distance, suitable for 26-300mm industrial pipe visual inspection.

## 41mm dia. Rotation/flip camera



180° rotation



360° rotation



Replaceable lens cover



### 24mm dia. WA-DV camera



- million-pixel wide-angle direct view
- FOV >100°
- IP67, durable full alloy material

### Centering device (optional)



- Different variable diameter specifications of 60-120, 140-400, 140-800, etc. to adjust pipeline inspection
- Self-contained light source for working conditions with insufficient light
- Compatible with multiple cables and lens

### 4-way articulation scope

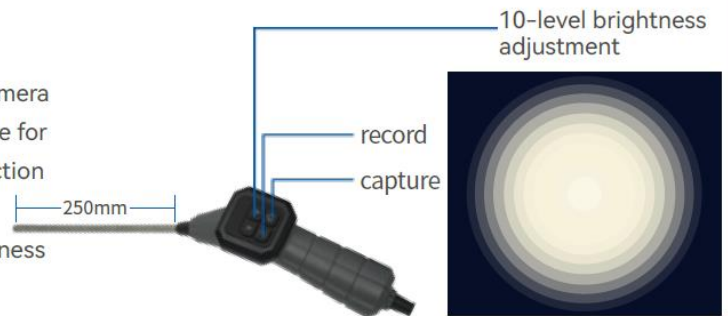


- 8mm million-pixel HD camera
- 360° rotating probe joystick control, more than 120° bending angle
- Single-click to capture/ record
- Lens brightness button control
- 3m wear-resistance inspection cable

### Stainless steel rigid rod probe



- 6mm million-pixel HD dual-view camera
- 250mm stainless steel insertion tube for high-frequency straight hole inspection
- Single-click to capture/ record
- Button control to adjust lens brightness



10-level brightness adjustment

record  
capture

### Applications



## Technical Parameter

HD Main Unit		Internal Cable Parameter			
Model	M40 controller	Inspection Wire Length	30M		
LCD display	7-inch LCD display	Wire Core Dia.	5.5mm (red wire)		
Resolution	1920×1080	Inspection Wire Material	High-strength glass fiber wire		
Frame Rate	30 fps	Ingress Protection	IP67		
Screen Brightness	400cd/m <sup>2</sup>	<b>SS Rigid Rod Probe (customizable)</b>			
Screen Contrast	800				
Touch Screen	Capacitive touch screen				
Video Output	HDMI				
USB Interface	DT USB 2.0 interface				
SD Card	Standard 64G		6mm DV	6mm Monocular Direct Rod Camera	6mm DSV
Video Resolution	1920×1080/1280×720	Rigid Rod Dia.	6.2mm	6.0mm	6.4mm
Image Resolution	1920×1080/1280×720	Rod Length	25cm	25cm	25cm
Software Function	Negative, scale	Rod Material	304 stainless steel	304 stainless steel	304 stainless steel
Language	Multiple	Illumination	HB LED	HB LED	HB LED
Lithium-ion battery	11.1V 6000MAH	Image Sensor	CMOS1/12	CMOS 1/9	CMOS 1/9
Charger	12V 3A	Pixels	1 million	1 million	1 million
Charging Time	8 h	DOF	15-∞	5~25mm/ 8-80mm optional	Direct view:8-80mm, side view:5-25mm
Working Time	>5h	Viewing Angle	0°	90°	0°-90°
Working Temperature	-10°C ~50°C	Wide Angle	>90°	>90°	>90°
Storage Temperature	-10°C ~50°C				
Ingress Protection	IP65				

41mm dia. Rotation/flip camera		24mm dia. WA-DV camera		4-Way Scope	
Lens Dia.	41mm	Lens Dia.	24mm	Dia.	8.4mm
Lens Length	60mm	Pixels	720P	IWL	3M/5M/10M
Pixels	720P	Illumination	12 H.B. LEDs	Sensor	CMOS 1/4
Illumination	12 H.B. LEDs	Housing Material	304 stainless steel	Pixels	1 million
Housing Material	Stainless steel	FOV	>80°	DOF	25-∞
Radial Inversion	180°	Image Sensor	CMOS 1/4	FOV	>90°
Axial Inversion	360°	DOF	25mm~∞	Viewing Angle	0°
Manual Focus Adjustment	Available	Ingress Protection	IP67	Illumination	>60000lux
Image Sensor	CMOS 1/4	WR	1m	Ingress Protection	IP67
Ingress Protection	IP67				
Water Resistance Pressure	1bar≈14.5psi				



📍 De Keerploeg 4 - 5056 MM - Berkel-Enschot – The Netherlands

☎ +31 (0) 655 740 417 🌐 [www.opti-mize.eu](http://www.opti-mize.eu) ✉ [info@opti-mize.eu](mailto:info@opti-mize.eu)