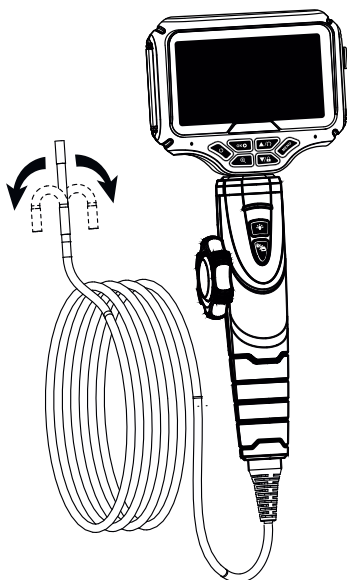
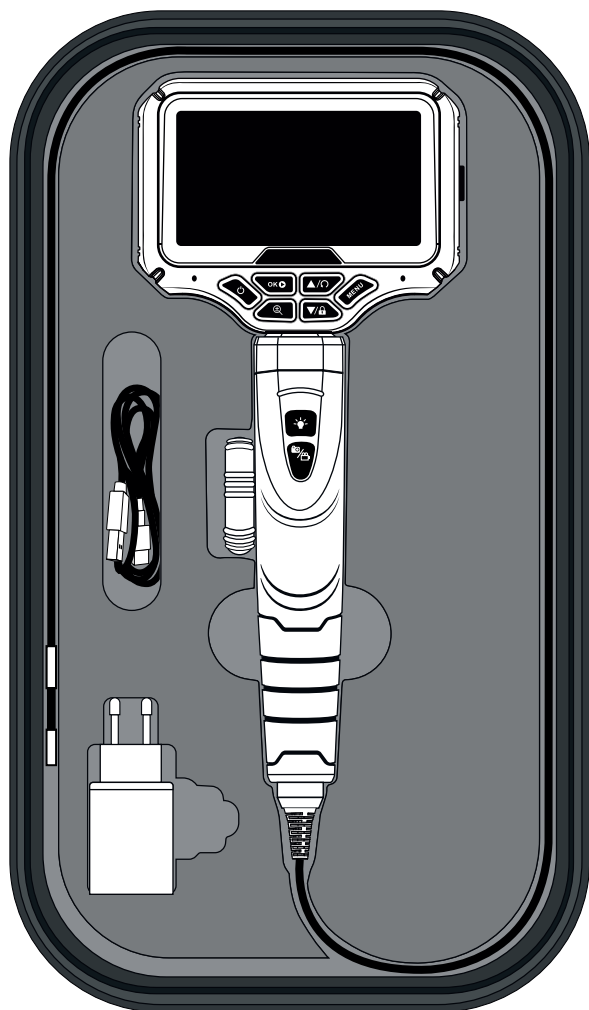


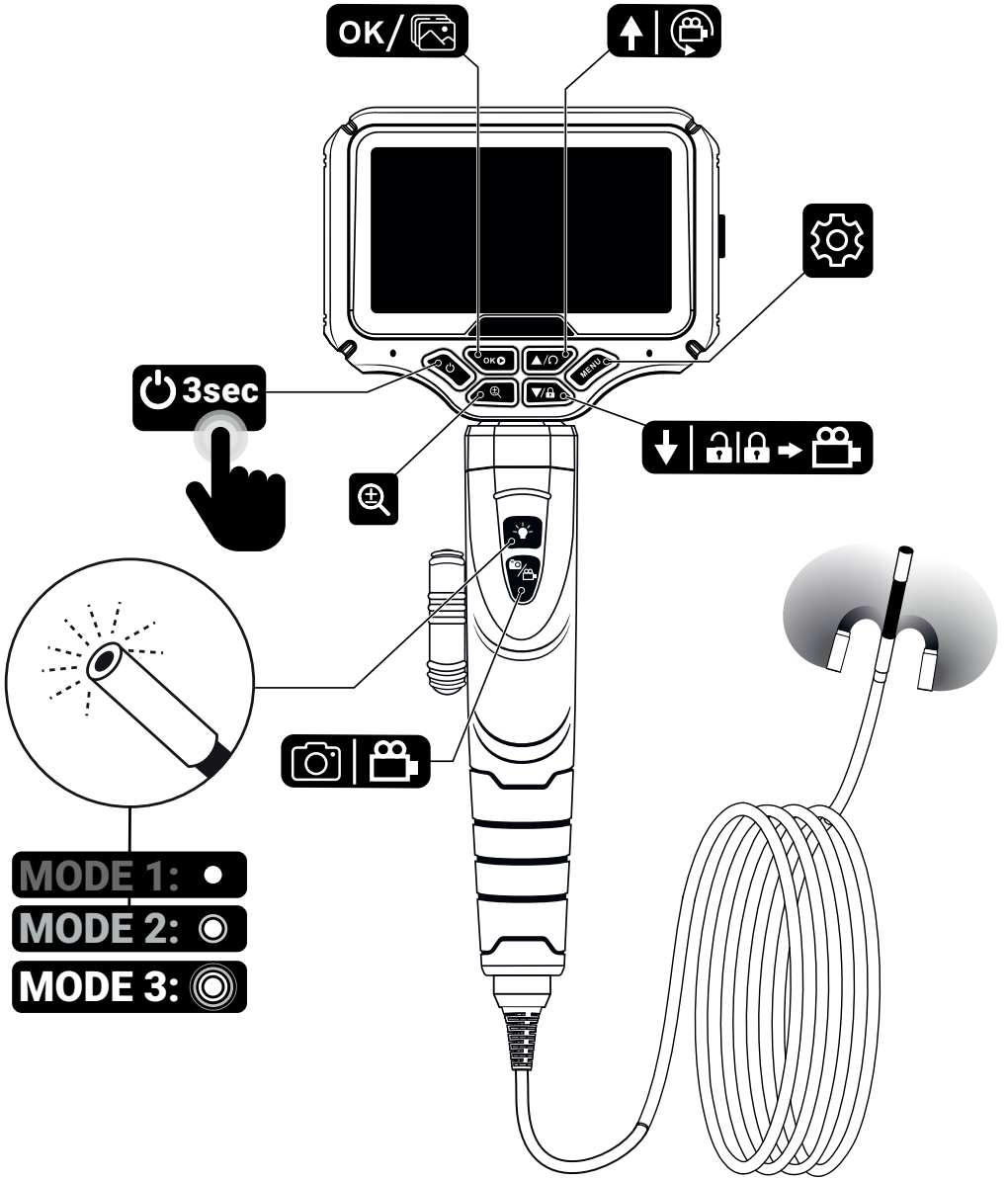
- GB** ARTICULATED VIDEOSCOPE 2 WAYS 3.9mm
- FR** VIDÉOSCOPE ARTICULÉ 2 VOIES 3,9 mm
- DE** GELENKTE VIDEOSKOPE 2 WEGE 3,9mm
- ES** VIDEOSCOPIO ARTICULADO 2 VÍAS 3,9 mm
- IT** VIDEOSCOPIO ARTICOLATO 2 VIE 3,9 mm
- PT** VIDEOSCÓPIO ARTICULADO 2 VEIAS 3,9 mm
- NL** GEARTICULEERDE VIDEOKIJKER 2 RICHTINGEN 3,9 mm
- DK** ARTIKULERET VIDEOSKOP 2 VEJE 3,9 mm
- SE** ARTICULATED VIDEOSCOPE 2 VÄGAR 3,9 mm
- NO** ARTIKULERT VIDEOSKOP 2 VEIER 3,9 mm
- CZ** ARTIKULOVANÝ VIDEOSKOP 2 DRUHY 3,9 mm
- SK** ARTIKULOVANÝ VIDEOSKOP 2 CESTY 3,9 mm
- HU** CSUKLÓS VIDEOSZKÓP 2 IRÁNYBA 3.9mm
- HR** ZGLOBNI VIDEOSKOP 2 STRANE 3.9mm
- PL** WIDEOSKOP ARTYKULOWANY 2-WAYS 3,9 mm
- LT** ARTIKULUOTAS VIDEOSKOPAS 2 PRIEMONĖS 3,9 mm
- EE** NIKULATSIOONILINE VIDEOSKOOP 2 SUUNA 3.9mm
- RO** VIDEOSCOP ARTICULAT 2 VARIANTE 3.9mm
- FI** NIVELLETTY VIDEOKOOPPI 2 PUOLTA 3.9mm
- LV** ARTIKULĒTAIS VIDEOSKOPS 2 VIDEOSKOPS 3,9 mm

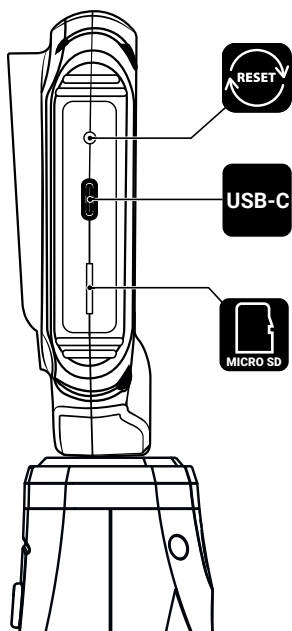
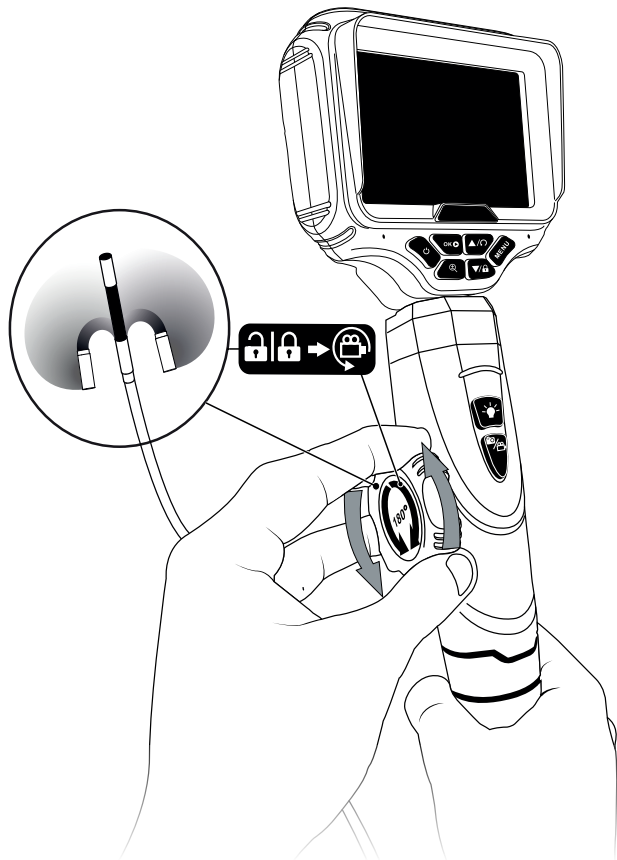


Original operating instructions

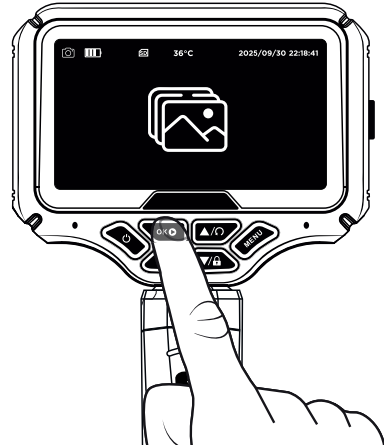
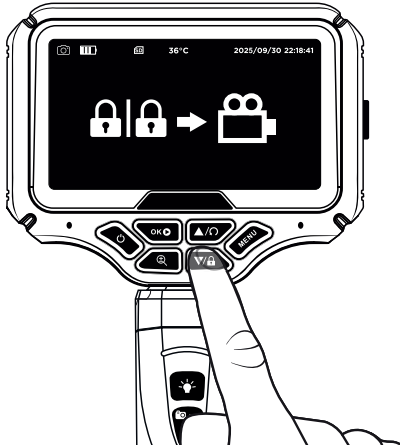
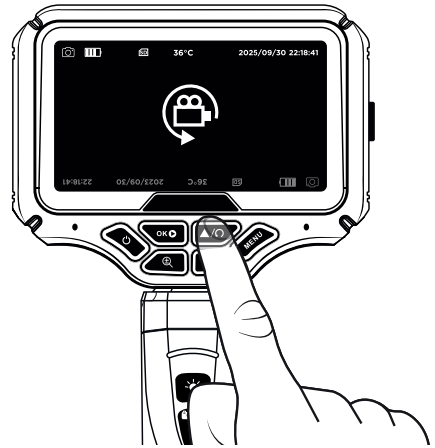
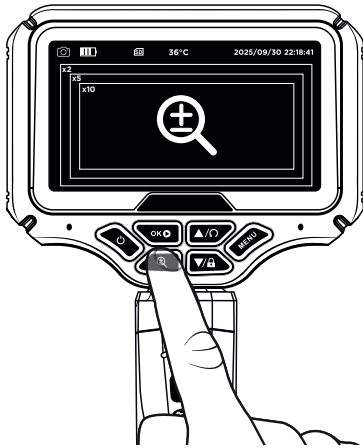
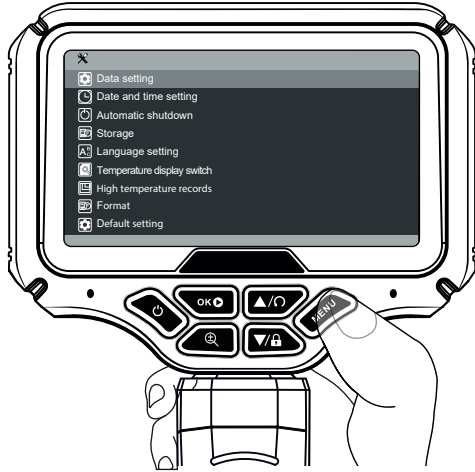








# Menus



# Specifications

---

## Camera parameters

Product	
Image sensor	1/9" CMOS
Effective pixels	1280*720
Focal distance	20-50mm
View angel	80°
Lens size	3.9mm
Semi rigid tube length	1M
Light source	0402 LED*6
Working current	<260mA
Working temperature	-10-60°C
Articulation angle	Two-way articulation
Waterproof level	IP67 snake camera

## Display parameters

Screen	4.5 IPS screen
Effective pixels	480*854
Battery	3.7V 5000MAH
Working current	Monitor 500MAH
Standby current	<40UA(microamps)
Max power	3.5W

# Safety Guide

---

Please read this operation manual carefully before using product

- This type of industrial borescope is not suitable for medical use (in humans or animals).
- When borescope is idle, put it out of the reach of children, and prohibit people who are not familiar with the product to use it.
- Do not use the product in environment with corrosive chemicals and organic solvents such as gasoline and acetone, which will damage the protective shell of the product and shorten its service life
- Do not pour any liquid on this product.
- Do not use the industrial borescope when it is smoking or emitting gas. If it has been damaged, it must be repaired and dealt with by professional maintenance personnel.
- Only dry cloth can be used to clean the display and handle.
- The lens can be cleaned with a slightly wet cloth, but not with corrosive substances (such as acetone, tenna water, etc.)
- Do not use this product as a strike tool or throw it away.
- The probe camera lens is a precision part, please take good care of it, the lens falls down and there is a risk of damage.
- Do not use this product in low temperature below -10°C or high temperature above 60°C.
- The probe part can be shaped, but the Angle of the shape can not be too small, not to fold the right Angle, because this will cause the probe fracture and can not be used.
- After using the product, please adjust the lens turning knob to the initial position.
- When the product is not in use, please put it back in the original packing box and store it in a dry and ventilated place.

# Warranty terms

---

Thank you for your purchase of our multifunctional borescope equipment, from the date of purchase, the whole machine free warranty for one year, after the warranty period, in accordance with the "paid service fee standard" to provide paid services. Warranty period will be effective from the date of purchase.

Warranty only applies to our products. Warranty does not apply to:

- 1) The whole machine or parts of this product have exceeded free repair period.
- 2) Failure or damage caused by accident or human factors, such as wrong operation and improper storage and maintenance, not according to the instructions. (such as computer virus, operation error, liquid intake, scratch, handling, bump, incorrect insertion, foreign matter falling into the mouse, insect pests, working temperature is too high or too low, too wet, input inappropriate voltage and other non-specified working environment)
- 3) Failure or damage caused by installation, repair, alteration, addition or disassembly of any organization or personnel without authorization of the Company.
- 4) Failure or damage caused by force majeure such as natural disasters.(e.g. earthquake, fire, lightning strike, etc.)
- 5) Normal and reasonable consumption or damage as well as the damage caused by it (such as: natural consumption, wear and aging of shell, wiring, plug in parts, electronic components, etc.)
- 6) Failure or damage caused by quality problems of machines (including parts) other than problem of our company. If the machine failure, the user can hold valid warranty card and fault to the local pit machine, if no pit can be directly to the local machine and valid warranty card directly send back to our company for repair, but the postage fees shall be borne by the users themselves back and forth, the company will according to the fault of repair or replacement parts, replacement of parts owned by the company. At the same time, the warranty period of the original product will not be extended due to maintenance or replacement, but the maintenance of the faulty machine (or accessories) will be guaranteed for 2 months.

In addition, the company does not bear the customer to pick up the product costs and risks. If you have other service requirements beyond the standard service scope of this warranty, please choose other paid services of our company.

# Warning

---

## General precautions:

- Do not use if ambient temperature exceeds 40°C or drops below 0°C.
- Stop use if overheating or strange odors occur.
- Do not use if the casing or battery is swollen or damaged.
- Avoid water contact – risk of short circuit or overheating.
- Keep away from heat sources and avoid impacts.
- Do not attempt self-repair – only qualified personnel allowed.

## Precautions during charging:

- Only use the supplied charger.
- Do not plug charger into a power strip.
- Charge in a fireproof, ventilated area away from flammable items.
- Never leave unattended if not in a secure cabinet.
- Stop charging if device overheats, smells, or swells.

## Storage and inactivity precautions:

- Store between 10°C and 25°C in a dry area.
- Fully charge before long-term storage.
- Do not leave fully discharged for more than a month.
- Recharge at least once a month.
- Uncharged batteries may suffer internal damage and cause fire risk.

## In case of overheating, liquid leakage, or smoke:

- For light smoke, quickly move device to a fireproof surface.
- If heavy smoke or fire occurs, do not touch – call emergency services.
- Only handle leaking batteries with protective gloves.

